

A 'Happy Birthday' edition

Where did the time go?

Today in late 2021 we sit on the cusp of opening a brand new purpose-built world class facility to house the internationally-renowned Stourbridge Glass collection that will showcase the glories of the past and celebrate the talents of the new. *(It's opening in April 2022 - Ed)*



Ah, but let us just pause a moment to reflect on those days of little more than a decade ago when all of the above was little more than the aspirations of the founding members of the British Glass Foundation. Step forward *GlassCuts*, a plucky little electronic tome intended to be an occasional bulletin of a few words every now and then to inform BGF supporters in their quest to gain credibility as a group, seek new partners to join them, forge a relationship with the glass world and, crucially, embrace the good people of Stourbridge in the creation of a 'People's Museum' www.stourbridgeglassmuseum.org.uk

Oops! What a monster we created. From humble origins *GlassCuts* has weathered the storms to become, as can be seen in our header, the official Journal of the British Glass Foundation and the Voice of the new Stourbridge Glass Museum. A comprehensive bulletin that features not only the work of BGF but which has become an *ad hoc* umbrella expression for the wider glass industry, *GlassCuts* is now delivered fortnightly to just about every major continent on the planet with readers and contributors as far afield as USA, Canada, Australia, Europe, even the Solomon Islands and Trinidad & Tobago. It is a respected organ across all platforms of print and social media and is a 'go to' source of information about the BGF and its work. We don't evaluate readership or 'hit' numbers but our extensive GDPR-compliant distribution list of people who want to be 'in the know' says it all.

We strive to be apolitical and impartial with news, views, observations and comment that reflect our inclusiveness. Of course, our emphasis is on Stourbridge Glass and the new museum to house it but we pride ourselves that if anyone in the *Wonderful World of Glass*^{©GF} extends us the courtesy of contacting us then we will do our best to acknowledge them. This has recently extended to our Reader's Queries forum where we have an enviable track record of resolving brainteasers and challenges by placing them before our esteemed readership. Thus has little ol' *GlassCuts* morphed into a serious heavyweight of reportage that has retained its capacity to also entertain with its humorously self-deprecating house-style, thereby maintaining its breadth of appeal to a broad spectrum from studious academia to home enthusiast.

Our collation of issues is lodged in perpetuity on our website www.britishglassfoundation.org.uk and provides a valuable reference for historians yet to be born who wish to study the roots of the organisation that brought the good folk of Stourbridge a suitable home for the glass that made the area so famous. The highs, the lows, the failures, the successes, the whens wheres and whys, it's all there.

Now, I confess that this burgeoning monster was actually my creation and you'll not be surprised to hear that I am immensely proud of it. However, it would not have grown beyond infancy without the support of a lady who in the interim has not only become my co-conspirator in all this madness but also a much valued friend and colleague. My grateful appreciation to Lynn Boleyn MBE, our Secretary & Business Manager, who perks each issue up, adds the images and does the nice bits before sending them out and without whom these communiqués would perhaps be more notable for my ruminating dreariness.

So why this eulogy? Well, October 2021 marks the 10th anniversary of *GlassCuts*. With 187 issues (*in my wildest dreams I never expected that* - Ed) under our belt and still going strong, we thought we would celebrate the occasion with the assurance that whatever the future brings we will continue in keeping with our promise that whatever happens then you, our loyal readers and supporters, will always be the first to know.

Happy 10th anniversary *GlassCuts*. And God bless all who sail in her.



IFoG 2022

Janine Christley, Festival Director International Festival of Glass has forwarded us the latest press release, which we are happy to reproduce here *verbatim* ...

British Glass Biennale 2022 - Call to Artists

The British Glass Biennale is the foremost juried exhibition of excellence in contemporary glass by artists, designers and craftspeople working in the UK and British Artists working abroad. It is the flagship exhibition within the International Festival of Glass. The British Glass Biennale is open to artists, designers, craftspeople and students working in all areas of contemporary glass practice or using glass as a key design element. The emphasis is on new work demonstrating the highest level of excellence in design, creative imagination and technical skill.

The British Glass Biennale and the International Festival of Glass were established to encourage and support glass artists and craftspeople. It is in this spirit that in recognition of the difficulties for many over the last few years that the submission fee has been significantly reduced to £10 for all categories.

Applicants must

- Have been living and working in the United Kingdom of Great Britain and Northern Ireland for the last two consecutive years; or
- Be living, working or studying abroad but possess a British passport and have previously lived in the UK for a minimum of 15 years; or
- Be studying on glass arts course in the UK

Each artist can submit up to three pieces for consideration. Each piece must be predominantly made of glass but can incorporate other materials. The work must have been made since 1st March 2019. All pieces selected for display must be for sale.

Deadline for entries - Midnight Sunday 27 February

The Jury for the British Glass Biennale 2022

Michelle Bowen	Director, UK New Artists
Brandi P. Clark	Executive Director, Glass Arts Society
James Devereux	Artist & Director, Devereux & Huskie Glassworks
Wayne Stratman	President, Stratman Design, USA
Bryony Windsor	Relationship Manager (Visual Arts) Midlands, Arts Council England
Matt Durran	Curator

The British Glass Biennale opens 26 August and closes 1 October. The Private View and Awards Ceremony will be held by invitation on Thursday 25 August.

The online submission form will open in early November, we look forward to receiving your application.



Honours for services rendered



Did you know that to become an Alderman of the Borough you have to serve a minimum of 15 years on Dudley Council (*no, me neither – Ed*). The title is one of the highest honours awarded by Dudley Council and recognises outstanding service to the borough.

So we are singularly impressed to note that five people with a combined total of more than 100 years of service between them have been honoured with the accolade. And, would you believe it, they are all supporters of the British Glass Foundation. So, step forward and take a well-deserved bow.

Former Mayor of Dudley Dave Tyler and long-serving ward councillor Bryan Cotterill - who both stood down this year after serving 21 and 22 years respectively – have been made honorary Aldermen.

Les Jones, a former leader of the council, and Hilary Bills, a former deputy mayor, are awarded the freedom of the borough. Both also bowed out in May having served 22 years and nine years respectively on the authority.

Councillor Ian Kettle - a former Mayor and the councillor with the longest period of continuous service currently sitting on the authority – was also awarded the freedom of the borough. Councillor Kettle has been a serving councillor since 1990 – an unbroken period of 31 years.

The trio join a prestigious list of names to receive the freedom scroll including businessman Roy Richardson, tennis star Jordanne Whiley and comedian and actor Lenny Henry.

More: <https://www.stourbridgenews.co.uk/news/19622145.honours-five-former-councillors-dudley/>



Sponsor news

We have been advised that Peter Kyle OBE has been appointed as John Ellerman Foundation's Chair Elect. Peter has been an Ellerman Trustee since 2014, and will begin his role as Chair on 1st January 2022. More:

https://ellerman.org.uk/uploads/210929-Peter-Kyle-OBE-appointed-as-John-Ellerman-Foundation%E2%80%99s-new-Chair-elect_1.pdf

We offer Mr Kyle our congratulations and thank all at the John Ellerman Foundation for their support.



GIFTS AND DONATIONS

to BGF funds, for which we thank you

Funding and maintaining a revenue stream is an ongoing requirement, and one that has never been more crucial. We greatly value your gifts and donations; thank you.

In addition to cash donations (see *below as to how you can do this*), readers are reminded of the opportunity to secure a lasting *memento* in the new museum by way of purchasing one of Allister Malcolm's engraved glass plaques. Details via the usual BGF address.

BGF routinely reviews its donation procedures. Enhancements are announced as and when but in the meantime we continue to accept donations direct by cash, cheque and BACS. **We would respectfully ask that *all* cheques and orders be made payable to BRITISH GLASS FOUNDATION.**

For donations by BACS our bank details are:

**HSBC Bank
Branch Identifier Code: MIDLGB2108U
Sort code: 40-38-07
Account number: 72076780**

To donate from anywhere in the world through *Paypal* visit <https://www.paypal.com/uk/for-you/transfer-money/send-money> and donate to bgf@britishglassfoundation.org.uk

To donate through our website visit www.stourbridgeglassmuseum.org.uk and hit the 'Donate' button.

Donations made by a UK taxpayer can attract Gift Aid, which is a great supplement to our funds and costs the donor nothing. All we need to claim this is your Gift Aid declaration; contact us for details if you have not already supplied us with relevant particulars.

Please note: In acknowledging the support of donors *GlassCuts* generally will not reveal either the details of the donor or the amount donated unless the donor indicates otherwise or the circumstances are in the public domain or public interest. This does not preclude the possibility of details, including the amount donated and/or the donor's particulars, appearing elsewhere in BGF material.

All donations are greatly appreciated. BGF is entirely philanthropic and its Trustees are unremunerated. BGF policy is that all monies received go directly to the cause. Donations can be as one-off contributions or standing order.

Notes and queries

Whilst we are happy to facilitate this *ad hoc* information exchange on unusual items of interest BGF cannot undertake valuations or offer comment other than that supplied by our correspondents. Submission does not guarantee publication. No responsibility ... etc (*usual caveats apply*)



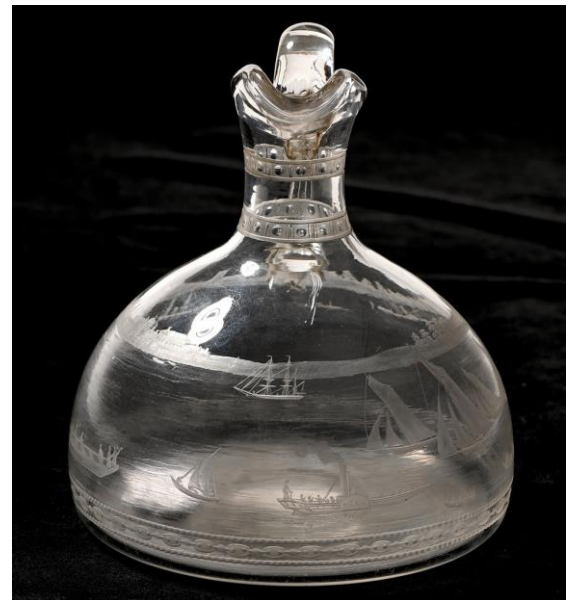
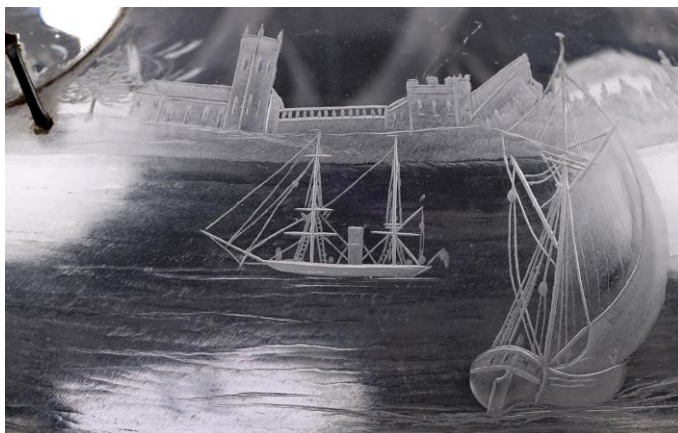
This is a real humdinger; let's see if we can help. Jon Hancock has sent us some images of a stunning piece of glass and says:

'Hello I am wondering if you can help me with this item that you see in the photographs? I 'won' this jug in an auction recently purely by chance and since then it has got me asking so many questions? My boss, who owns a Nottingham Auction house, thinks it's utterly fabulous, especially the engraving, and suggested I emailed you.'

He said that the engraving was so very fine and elegant that he suspects it may have been by Frederick Kny (*now there's a name that many in GlassCuts-land will be familiar with - Ed*). I have looked and am unable to find any engravers mark - as yet and I am hoping you might be able to help more?

As you can see the scene is set on The Thames. I am in contact with a gentleman who knows about paddle steamers and he suggests, at the moment, that it may be from the 1820s solely going by my description (there were no photos of it at that point) of the paddle steamer 'Hero'. My boss suggests that the Palace of Greenwich may be one of the buildings on the embankment there'.

John, we'll give it our best shot. Readers, it's over to you.



Living la vida lockdown, part 27

- * More *Dispatches From The Attic* and loads of other news from CGS. www.cgs.org.uk
- * *Alan J. Poole newsletter* latest edition. alanjpoole@aol.com
- * *The Worshipful Company of Glass Sellers of London*. Regular updates, forthcoming Zoom presentations and more. info@glass-sellers.co.uk
- * *Patterns in Glass* seminar. 30th October 2021. Red Lion Square, London. www.just-glass.co.uk
- * *Circlesphere*. Neon Workshops celebrating 10 years in Wakefield. www.neonworkshops.com

From the Hot Studio:

Gearing up for Christmas!

Just a reminder in these troubled times

If you've got something 'glassy' to say and you want it said to somebody else, consider sending it to us and we'll do our best to help pass the information via *GlassCuts*. Usual address.

And finally ...

From our Want Ads section:

Lone Ranger has lost partner Tonto. Needs a new one. Pronto

I'll start the car.

Graham Fisher MBE FRGS
Press & Publicity
pp British Glass Foundation
www.britishglassfoundation.org.uk

Getting involved

Would you like to be part of a vibrant and enthusiastic group of volunteers dedicated to supporting the British Glass Foundation and its work at the new glass museum?

Specialist skills or knowledge are welcome but not essential. We are committed to equal opportunities and full training will be given where necessary. To find out more, contact us via the usual address and we will be delighted to do the rest.

Promotional opportunities

Black Country Radio broadcasts throughout the Black Country on 102.5 FM and also via DAB and on-line around the world. If your event satisfies the criteria of not-for-profit, charitable or philanthropic and is community orientated there is no charge.

Go to www.blackcountryradio.co.uk hover over 'Local' and submit the form you'll find under *Events*. Your announcement will then appear on the *Events Guide*. Allow sufficient notice and the event may be 'voiced' and broadcast live on air during daytime broadcasting. Depending on the number of events, yours might be broadcast several times; there's no guarantee but it should appear at least once. Meanwhile it stays on the *Events Guide* listings on the world-wide web until the day itself.

Keeping in touch

Museum Director Ollie Buckley

Direct Line: 01384 900447: Mobile: 07483 157242
Email: obuckley@stourbridgeglassmuseum.org.uk

BGF Secretary Lynn Boleyn MBE

Direct Line: 01384 900447: Mobile: 07747 563623
Email: bqf@britishglassfoundation.org.uk

Both by snail-mail at:

[Stourbridge Glass Museum](#), High Street, Wordsley, West Midlands, DY8 4FB

Museum Wi-Fi:

SSID: NET-SGM-WIFI-GUEST WiFi pass: cOne1!



These are the QR codes for the British Glass Foundation (left) and Virgin Money Giving (right).

Scan to browse the work of the BGF or to make a donation. If you are donating by VMG then please note that VMG's own commission fees, over which BGF has no control, may apply.



THE BRITISH GLASS FOUNDATION GRATEFULLY ACKNOWLEDGES THE SUPPORT GIVEN BY THE EUROPEAN REGIONAL DEVELOPMENT FUND AND THE HERITAGE LOTTERY FUND



EUROPEAN UNION
Investing in Your Future
European Regional
Development Fund 2007-13



... also Dudley MBC, Fieldings Auctioneers, Enovert Community Trust, Istock Enovert Trust, Clive & Sylvia Richards Charity



BGF would also like to acknowledge the following, *inter alia*, for their support and generosity ...

Black Country Local Enterprise Partnership Growing Places Fund : Garfield Weston : Edward Cadbury Charitable Trust : The Headley Trust : The Charles Hayward Foundation : W.A. Cadbury Charitable Trust : John Ellerman Foundation : The Worshipful Company of Glass Sellers of London : The Pilgrim Trust

... together with many other contributions from other trusts, foundations and individuals. (E&OE)

Full details of BGF partners, supporters and sponsors at: www.britishglassfoundation.org.uk/the-foundation/

Follow us on Facebook and Twitter



<https://m.facebook.com/The-White-House-Cone-Museum-of-Glass-1783619608579416/>



<https://twitter.com/whitehousecone>

- fin -

Disclaimer

We comply with the provisions of Data Protection and so we must remind you that *GlassCuts* exists solely for the information of it supporters, our Privacy Statement is outlined in detail on our website at www.britishglassfoundation.org.uk and subscribers can withdraw at any time just by sending an email to the bgf address below with 'stop' in the subject header.

We also welcome you passing *GlassCuts* on to anyone you feel may be interested in our work. You know the rest but if in any doubt then please communicate with us directly in the first instance via bgf@britishglassfoundation.org.uk



British Glass Foundation

www.britishglassfoundation.org.uk

Registered Charity No 1139252 / Registered Company No 7344291