

GlassCuts

The Journal of the British Glass Foundation;
the Voice of Stourbridge Glass Museum

STOURBRIDGE
GLASS MUSEUM



Edition: 192

Dated: 11.1.22

**A Happy New
'This is the Year it's all going to happen' edition**

Congratulations and thanks



2022 is the year that the Contemporary Glass Society (CGS) celebrates its silver anniversary. Not surprisingly, there's a lot going on, a major part of this being their collaboration with Stourbridge Glass Museum (SGM) in a rather special project.

The commission fee was jointly funded by CGS and SGM, and both CGS and SGM staff attended the shortlisting and interviews. You can't get much more collaborative than that. This is a substantial effort drawing many strands together so we felt it appropriate to present the Society's own press release *verbatim* alongside this edition of *GlassCuts*.

Happy anniversary CGS, and thank you for your support. Learn more about CGS at www.cgs.org.uk



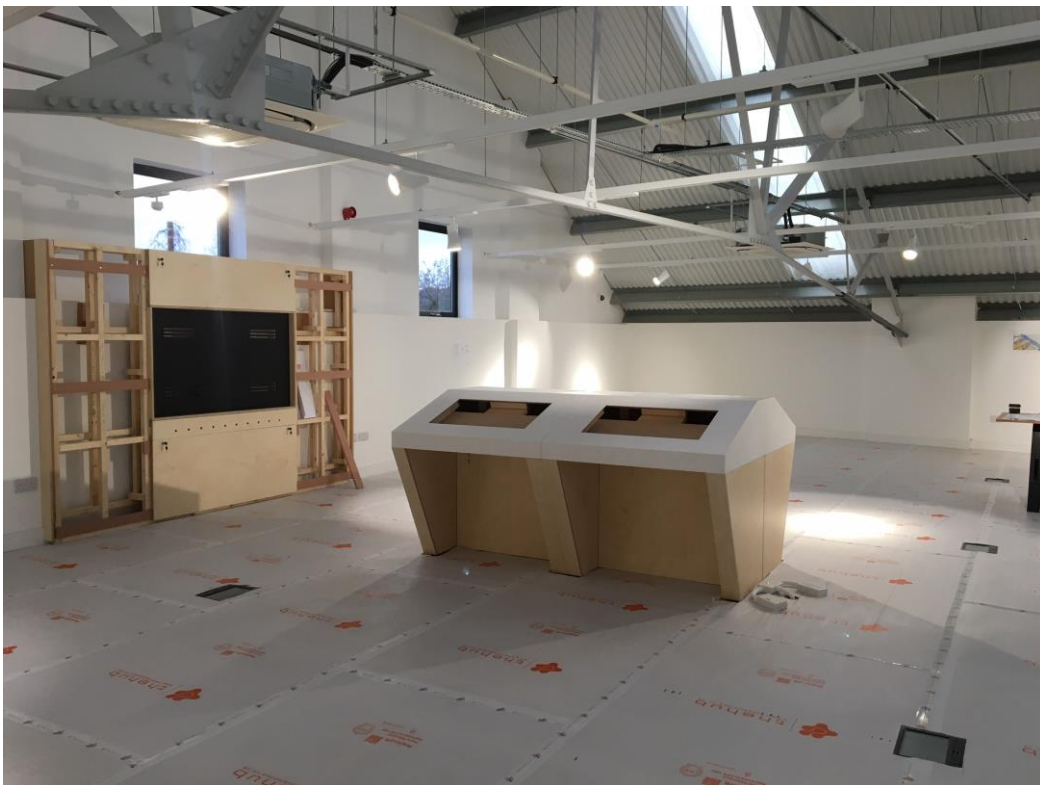
Hitting the ground running

The work continues apace with news that The Hub are on site from today until 25 February undertaking our internal fit-out. The hub are a team of locally-based specialists who have already impressed us greatly. We know we are in good hands - take a look for yourself at <https://www.thehublimited.co.uk/about-us/>

Here's how it's taking shape as at 10.1.22 when the images were taken by Lynn. More at <https://www.britishglassfoundation.org.uk/internal-fit-out-begins/>



Downstairs Space



Upstairs Space with Touchscreen Shell

SGM 'What's On' Leaflet

Out soon. Watch this space.

Services rendered

We are pleased to see some locals who are known to us getting their rich desserts in the New Year's Honours list. An OBE each goes to ...



Andrew Ian Lovett. Chair, Association of Independent Museums. For services to Cultural Heritage particularly during Covid-19. (Birmingham, West Midlands)

<https://aim-museums.co.uk/aim-chair-awarded-obe-services-cultural-heritage/>

Aonghus Coinn Huntly Gordon. Founding Trustee, Ruskin Mill Trust. For services to Cultural Heritage and Education. (Stroud, Gloucestershire)

<https://www.thenorthernecho.co.uk/news/19818235.aonghus-gordon-ruskin-mill-trust-awarded-obe/>



Richard Port, Solicitor at George Green, has been awarded an MBE:

<https://www.stourbridgenews.co.uk/news/19824011.mayor-congratulates-recipients-queens-new-years-honours/>

The full list is: <https://inews.co.uk/news/new-years-honours-list-2022-full-who-mbe-obe-cbe-knight-dame-difference-explained-1378053>

Congratulations to all.

GIFTS AND DONATIONS

to BGF funds, for which we thank you

Funding and maintaining a revenue stream is an ongoing requirement, and one that has never been more crucial. We greatly value your gifts and donations; thank you.

BGF routinely reviews its donation procedures. Enhancements are announced as and when but in the meantime we continue to accept donations direct by cash, cheque and BACS. **We would respectfully ask that *all* cheques and orders be made payable to BRITISH GLASS FOUNDATION.**

For donations by BACS our bank details are:

HSBC Bank
Branch Identifier Code: MIDLGB2108U
Sort code: 40-38-07
Account number: 72076780

To donate from anywhere in the world through *Paypal* visit <https://www.paypal.com/uk/for-you/transfer-money/send-money> and donate to bgf@britishglassfoundation.org.uk

To donate through our website visit www.stourbridgeglassmuseum.org.uk and hit the 'Donate' button.

Donations made by a UK taxpayer can attract Gift Aid, which is a great supplement to our funds and costs the donor nothing. All we need to claim this is your Gift Aid declaration; contact us for details if you have not already supplied us with relevant particulars.

Please note: In acknowledging the support of donors **GlassCuts** generally will not reveal either the details of the donor or the amount donated unless the donor indicates otherwise or the circumstances are in the public domain or public interest. This does not preclude the possibility of details, including the amount donated and/or the donor's particulars, appearing elsewhere in BGF material.

All donations are greatly appreciated. BGF is entirely philanthropic and its Trustees are unremunerated. BGF policy is that all monies received go directly to the cause. Donations can be as one-off contributions or standing order.

Notes and queries

Whilst we are happy to facilitate this *ad hoc* information exchange on unusual items of interest BGF cannot undertake valuations or offer comment other than that supplied by our correspondents. Submission does not guarantee publication. No responsibility ... etc (*usual caveats apply*)

Janet Amos has sent us this first teaser of the New Year: *'I'm hoping you might be able to help. My grandfather's family lived in Stourbridge at the turn of the 20th century and they had a connection with glass making. According to family legend there is just one piece of glass left, 'somewhere' in the family. I attach some photos of two goblets in my possession. I have no idea where they came from. Please could you take a look; is there a possibility that either could have come from Stourbridge? I have a very large extended family - the missing glass could be anywhere!'*

Any suggestions to the usual BGF or SGM address please and we'll pass them onto Janet.



Living la vida lockdown, part 32

- * More *Dispatches From The Attic* and loads of other news from CGS including a special anniversary. See also leading feature 'Congratulations and thanks' above. www.cgs.org.uk
- * *Alan J. Poole newsletter* latest edition. alanjpoole@aol.com
- * *The Worshipful Company of Glass Sellers of London*. Regular updates, forthcoming Zoom presentations and more. info@glass-sellers.co.uk
- * Oxford International Art Contest & Exhibition 2022. Call for artists. www.galeria-moderna.com
- * *Vessel Gallery release*. 'Distant Electric vision a new & highly anticipated solo show by glass artist Jon Lewis, 10th - 18th February' plus other news. info@vesselgallery.com

From the Hot Studio:

www.allisternalcolm.com **Facebook** @allisternalcolmglass **Twitter** @allisternalcolm **Instagram** @allisternalcolmglassltd

Allister wrapped in a quilt jacket and woolly hat in a freezing cold hot shop? Yes indeed, see for yourself. Interestingly, for anyone who may still doubt the power of social media, Allister informs us that within minutes of this clip going online it had over 3000 hits. It's probably stratospheric by now.

<https://www.dropbox.com/s/hi9kumv99pyb70z/fe5780e379fe6a84e09d6e710669a5b8.MOV?dl=0>

Just a reminder in these troubled times

If you've got something 'glassy' to say and you want it said to somebody else, consider sending it to us and we'll do our best to help pass the information via *GlassCuts*. Usual address.

And finally, from the BGF arts correspondent ...

*'I notice that Sir Elton John has put on a lot of weight over Christmas.
So it's Goodbye Normal Jeans'.*

I'll start the car.

**WITH BEST WISHES FOR A HAPPY AND
GLASSY NEW YEAR TO YOU ALL**

Graham Fisher MBE FRGS
Press & Publicity
pp British Glass Foundation
www.britishglassfoundation.org.uk

Getting involved

Would you like to be part of a vibrant and enthusiastic group of volunteers dedicated to supporting the British Glass Foundation and its work at the new glass museum?

Specialist skills or knowledge are welcome but not essential. We are committed to equal opportunities and full training will be given where necessary. To find out more, contact us via the usual address and we will be delighted to do the rest.

Promotional opportunities

Black Country Radio broadcasts throughout the Black Country on 102.5 FM and also via DAB and on-line around the world. If your event satisfies the criteria of not-for-profit, charitable or philanthropic and is community orientated there is no charge.

Go to www.blackcountryradio.co.uk hover over 'Local' and click 'Local Events Guide'. Submit the form you'll find at upper left under '+ Add Event'. Your announcement will then appear on the *Events Guide*. Allow sufficient notice and the event may be 'voiced' and broadcast live on air during daytime broadcasting. Depending on the number of events, yours might be broadcast several times; there's no guarantee but it should appear at least once. Meanwhile it stays on the *Events Guide* listings on the world-wide web until the day itself.

Keeping in touch

Museum Director Ollie Buckley

Direct Line: 01384 900447

Email: info@stourbridgeglassmuseum.org.uk

BGF Secretary Lynn Boleyn MBE

Direct Line: 01384 900447

Email: bgf@britishglassfoundation.org.uk

Both by snail-mail at:

Stourbridge Glass Museum, Stuart Works, High Street, Wordsley, West Midlands, DY8 4FB



These are the QR codes for the British Glass Foundation (left) and Virgin Money Giving (right).

Scan to browse the work of the BGF or to make a donation. If you are donating by VMG then please note that VMG's own commission fees, over which BGF has no control, may apply.



THE BRITISH GLASS FOUNDATION GRATEFULLY ACKNOWLEDGES THE SUPPORT GIVEN BY THE EUROPEAN REGIONAL DEVELOPMENT FUND AND THE HERITAGE LOTTERY FUND



EUROPEAN UNION
Investing in Your Future
European Regional
Development Fund 2007-13



Made possible with

**Heritage
Fund**

... also Dudley MBC, Fieldings Auctioneers, Enover Community Trust, Istock Enover Trust, Clive & Sylvia Richards Charity



BGF would also like to acknowledge the following, *inter alia*, for their support and generosity ...

Black Country Local Enterprise Partnership Growing Places Fund : Garfield Weston : Edward Cadbury Charitable Trust : The Headley Trust : The Charles Hayward Foundation : W.A. Cadbury Charitable Trust : John Ellerman Foundation : The Worshipful Company of Glass Sellers of London : The Pilgrim Trust

... together with many other contributions from other trusts, foundations and individuals. (E&OE)

Full details of BGF partners, supporters and sponsors at: www.britishglassfoundation.org.uk/the-foundation/

Follow us on *Facebook, Twitter and Instagram*



<https://m.facebook.com/GlassMuseumUK/>



<https://twitter.com/glassmuseumuk>

Instagram

<https://www.instagram.com/glassmuseumuk/>

- *fin* -

Disclaimer

We comply with the provisions of Data Protection and so we must remind you that *GlassCuts* exists solely for the information of its supporters, our Privacy Statement is outlined in detail on our website at www.britishglassfoundation.org.uk and subscribers can withdraw at any time just by sending an email to the bgf address below with 'stop' in the subject header.

No responsibility etc. etc ... (usual caveats apply)

We welcome you passing *GlassCuts* on to anyone you feel may be interested in our work. You know the rest but if in any doubt then please communicate with us directly in the first instance via bgf@britishglassfoundation.org.uk



British Glass Foundation

www.britishglassfoundation.org.uk

Registered Charity No 1139252 / Registered Company No 7344291