

GlassCuts

The Journal of the British Glass Foundation;
the Voice of Stourbridge Glass Museum

STOURBRIDGE
GLASS MUSEUM

Celebrating BGF History 2009 – 2022

Click: www.britishglassfoundation.org.uk/the-foundation/ or <https://grahamfisher.co.uk/resources>

Edition: 207

Dated: 24.8.22

Days since SGM opening on 9th April ...

1

3

6

Welcome aboard



We are very pleased to welcome on board **Leigh White** as a Director of BGF Trading Limited, the trading arm of the charity. Leigh was the former Centre Manager at Ruskin Glass Centre, Glasshouse Arts Centre and Webb Corbett Visitor Centre where he successfully developed and established a multimillion pound visitor attraction from a building site to a thriving centre that is still home to many independent businesses, and an organic café. Leigh has spent recent years working as a marketing and communications specialist at executive level in financial services, and is currently working for £28.5bn investment manager LGPS Central in Wolverhampton where he lives. Leigh will work closely with the Trustees and be responsible for helping the Museum Manager and the staff with the day to day running of the museum to ensure a high quality visitor experience.

Moemi ('Mo') Madigan took up her new role of Volunteer Co-Ordinator on 2nd August and we are very pleased to welcome her to our team. Born in Japan Moemi is a self-employed translator/interpreter and a qualified Blue Badge tourist guide. Moemi has been volunteering at the museum for the last six months mainly on reception, welcoming visitors to the museum, working with our dedicated team of volunteers and organising Japanese Origami sessions for children during the Summer holidays.



WHAT'S ON AT SGM

Full details of our packed programme of events are contained in our brochure (available free of charge from the Museum and other local outlets) or via the Stourbridge Glass Museum website by clicking here: <https://www.stourbridgeglassmuseum.org.uk/events/>

Something Old for Something New

This is simply an ace idea of Will Farmer's, sent out by own very own Lynn Boleyn MBE who says:



'Here's a question for all you brilliant and talented glass makers! Do you have an old item you made many years ago, gathering dust in your studio or languishing at the back of your garage? More importantly would you consider letting it go for a great cause? Welcome to our new venture.....something old for something new!

In conjunction with Will Farmer, one of our Trustees and a Director of Fieldings Auctioneers (Stourbridge), we've come up with the idea that something old could help fund something new. If you could find an old friend that you'd be happy to donate we'd be thrilled, especially if there was a story behind it that we could share. We don't want you to make anything new - with a green agenda we aim to help glass artists and the new museum.

Will Farmer at Fieldings "The Approachable Auctioneers" has agreed to auction any donations free of charge and also with 'no reserve' meaning this will be accessible to everyone and with all funds going to the museum. If you think you've got something then please include a short note about the piece you are donating, and Will Farmer will include this in the catalogue he will draw up for the auction. You can deliver your item to Fieldings or the museum during the International Festival of Glass/Biennale.

For more information contact Will Farmer will@fieldingsauctioneers.co.uk or Lynn Boleyn bgf@britishglassfoundation.org.uk

GIFTS AND DONATIONS

to BGF funds, for which we thank you

Funding and maintaining a revenue stream is an ongoing requirement. We greatly value your contributions. BGF Trustees are unremunerated; all monies received go to the cause. Donations can be as one-off contributions or standing order.

BGF routinely reviews its donation procedures. Enhancements are announced as and when but in the meantime we continue to accept donations direct by cash, cheque and BACS. **We would respectfully ask that all cheques and orders be made payable to BRITISH GLASS FOUNDATION.**



This is the QR code for the British Glass Foundation.
Scan to browse the work of the BGF or to make a donation.

For donations by BACS our bank details are:

HSBC Bank
Branch Identifier Code: MIDLGB2108U
Sort code: 40-38-07
Account number: 72076780

To donate via *JustGiving* visit:

<https://donate.justgiving.com/donation-amount?uri=aHR0cHM6Ly9kb25hdGUtYXBpLmp1c3RnaXZpbmcuY29tL2FwaS9kb25hdGlvdnMvN2FIMjkxYTM1NDlhNDUxMjk1NzdlODgzOFRiZjhhMDQ=>

To donate *PayPal* visit: <https://www.paypal.com/uk/for-you/transfer-money/send-money> and donate to bgf@britishglassfoundation.org.uk

To donate through our website visit: www.stourbridgeglassmuseum.org.uk and hit the 'Donate' button.

Donations made by a UK taxpayer can attract Gift Aid, which is a great supplement to our funds and costs the donor nothing. All we need to claim this is your Gift Aid declaration; contact us for details if you have not already supplied us with relevant particulars.

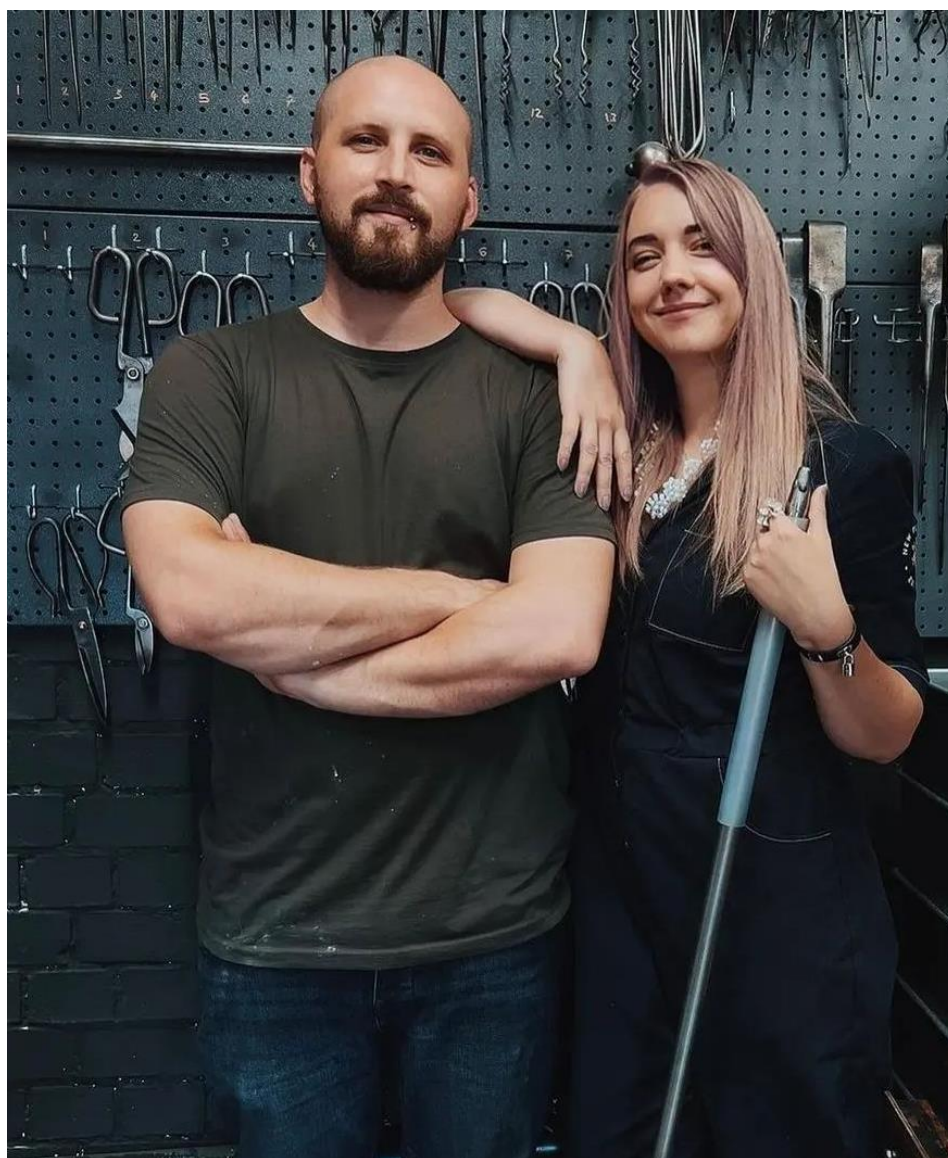
Please note: In acknowledging the support of donors *GlassCuts* generally will not reveal either the details of the donor or the amount donated unless the donor indicates otherwise or the circumstances are in the public domain or public interest. This does not preclude the possibility of details, including the amount donated and/or the donor's particulars, appearing elsewhere in BGF material.

Big goings-on across yonder

BGF Trustee and glassmaker Elliot Walker and Bethany Woods are staging a Grand Opening of *Blowfish Gallery and Hot Shop*, a joint venture between him and Bethany based just over the road from us at Red House Cone, in a special *Crystal Mile Contemporary Exhibition and Hot Glass Demonstration*.

The event coincides with the International Festival of Glass on 26th and 27th August from 11:00am each day and will feature new talent together with a display of works from thirteen internationally renowned contemporary artists in glass, including hot sculpted, blown, cast, fused, neon and Pate de Verre.

On behalf of all at BGF and SGM we wish Elliot, Bethany and the team well on their special occasion. More Information, schedule and RSVP via bethany@blowfishglassart.com



Oriental influences

Japonisme in Stourbridge is a presentation explaining how British glassmakers responded to a fashion sweeping across Europe and covers Japanese influences on 19th century British and European glass decoration. The speaker is glass enthusiast and Founding Patron Clive Manison. The venue is Stourbridge Glass Museum at 2:30pm on Sunday 28th August and the free admission includes light refreshments. Tickets will be available via SGM reception, info@stourbridgeglassmuseum.org.uk or 01384 900447. Tickets are free but there is limited seating so essential to book.

Change at the helm

The Blackcountryman, the premier quarterly magazine issued by the Black Country Society, has a new Editor. We wish Emma Purshouse well in her new role would update all potential contributors that editorial submissions can be made via emmaasif@hotmail.com

Notes and queries

Whilst we are happy to facilitate this *ad hoc* information exchange on unusual items of interest BGF cannot undertake valuations or offer comment other than that supplied by our correspondents. Submission does not guarantee publication. No responsibility ... etc (*usual caveats apply*)

* In the last edition we posed a teaser from Jane Quinn who sought advice on a green vase formerly belonging to her mother. SGM Curator Harrison Davies was quick off the mark with some informative background before we even went to print, then it was the turn of our loyal readers who once again came up trumps. Andy McConnell will be known to many as a presenter on BBC's Antiques Roadshow; more locally we know and appreciate him as a supporter of BGF and he kindly supplied this fulsome response:

'Mary Gregory glass' is a dealer's term and a misnomer. Nobody called Mary Gregory ever had anything to do with the glass commonly given her name. The only Mary Gregory known in glassmaking history was American but no glass of this type was ever made in the States. They were all made in Bohemia before it became Czechoslovakia.

The original pieces, generally with white enamelling on cranberry, green & (less commonly) blue, dates c1880-1910, most made in Bohemia but I have seen similar, colourless examples marked 'Austria'. So-called 'Mary Gregory' glass became very popular in from the mid-1970s, causing prices to rise to an extent that it was widely reproduced in China ... and even by Thomas Webb and Dartington. I vividly recall seeing cartons marked 'Made in China' rammed with it at large antiques fairs.

The one illustrated is a period piece, dating somewhere around 1900. These were very commonly given as wedding presents to working women & survive in large numbers because they were highly prized. Unfortunately, this is no longer the case & they carry low values today ... especially when fitted with the wrong stopper (like this one).

There is a small section about them [with the correct stoppers] in my book 'The Decanter, Ancient to Modern' [2018], page 252.'

We also heard from another friend Dilwyn Hier of Antique Stourbridge Glass who confirmed:

'The green "Mary Gregory" style decanter is certainly not Stourbridge and most probably from one of the Bohemian factories. Quite common everyday glass.'

Our thanks to Andy, Dilwyn and Harrison for their contributions, all of which have been passed on to our original enquirer.



* Charlotte Hough of Gloucestershire asks: *'I am trying to research a glass bottle thought to be made by my ancestors in south east Poland round Tyrana Woloska, Lesko area around 1830 -1850. It is hand blown and blue. Is it a bottle or decanter, would it have had a stopper or cork, what would it contain? Why does it have a ring around its neck halfway down? How can I find out if there was a foundry in the town? Part of the family came to the UK from that area of Poland to Brtsitol in the 1850s and worked in glass. I have researched Bristol Blue but as yet have found no connection'.*

* Meanwhile, over at Birmingham City University, Prof Kenneth Quickenden has a bit of a problem he'd like some help with: *'I'm writing a book on Boulton and Fothergill silver. In 1776 Thomas Bell at Boulton's Soho Manufactory bought for Miss Pidcock a silver waiter costing £15 19s 0d.*

She also bought silver mounts for cruets and another silver waiter in 1778, costing £18 12s 5d. Her address was given as The Platts, near Stourbridge. John Pidcock Jnr. bought silver plated wares at about the same date. Can you help me identify which members of the Pidcock family these two customers (siblings ?) are most likely to have been?'

PARISH NOTICES

tell us the news from your world

Send us your latest and we'll try to mention it. No guarantees other than we'll do our best.

- * Latest news from the *Contemporary Glass Society* including on-going information regarding their 25th anniversary celebrations throughout 2022. www.cgs.org.uk
- * *Alan J. Poole newsletter* latest edition. alanjpoole@aol.com
- * *The Worshipful Company of Glass Sellers of London*. Regular updates, forthcoming Zoom presentations and more. info@glass-sellers.co.uk
- * *The Glass Society Events Schedule*. <http://glassassociation.org.uk>

From the Hot Studio:

www.allisternalcolm.com **Facebook** @allisternalcolmglass **Twitter** @allisternalcolm **Instagram** @allisternalcolmglassltd

Gearing up for IFoG

Just a reminder in these interesting times

If you've got something 'glassy' to say and you want it said to somebody else, consider sending it to us and we'll do our best to help pass the information via *GlassCuts*. Usual address.

And finally, test your local dialect ...

My next door neighbour was recently hauled before magistrates for pulling and twisting at his poor wife's head. *'An' all because the taxman said 'er had £3000 in arrears.'*

Oh dear, you probably have to be born within 5 miles of Gornal to appreciate that one. But I'll still get my coat.

Graham Fisher MBE FRGS
Trustee, PR & Comms
pp British Glass Foundation
www.britishglassfoundation.org.uk

Getting involved

Would you like to be part of a vibrant and enthusiastic group of volunteers dedicated to supporting the British Glass Foundation and its work at the new glass museum?

Specialist skills or knowledge are welcome but not essential. We are committed to equal opportunities and full training will be given where necessary. To find out more, contact us via the usual address and we will be delighted to do the rest.

Promotional opportunities

Black Country Radio broadcasts throughout the Black Country on 102.5 FM and also via DAB and on-line around the world. If your event satisfies the criteria of not-for-profit, charitable or philanthropic and is community orientated there is no charge.

Go to www.blackcountryradio.co.uk hover over 'Local' and click 'Local Events Guide'. Submit the form you'll find at upper left under '+ Add Event'. Your announcement will then appear on the *Events Guide*. Allow sufficient notice and the event may be 'voiced' and broadcast live on air during daytime broadcasting. Depending on the number of events, yours might be broadcast several times; there's no guarantee but it should appear at least once. Meanwhile it stays on the *Events Guide* listings on the world-wide web until the day itself.

Keeping in touch

BGF Secretary Lynn Boleyn MBE
Direct Line: 01384 900447
Email: bgf@britishglassfoundation.org.uk
Snailmail: Stourbridge Glass Museum, Stuart Works, High Street, Wordsley, West Midlands, DY8 4FB

THE BRITISH GLASS FOUNDATION GRATEFULLY ACKNOWLEDGES THE SUPPORT GIVEN BY THE EUROPEAN REGIONAL DEVELOPMENT FUND AND THE HERITAGE LOTTERY FUND

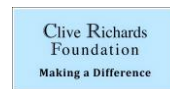


EUROPEAN UNION
Investing in Your Future
European Regional
Development Fund 2007-13



Made possible with
**Heritage
Fund**

... also Dudley MBC, Fieldings Auctioneers, Enovert Community Trust, Ibstock Enovert Trust, Clive & Sylvia Richards Charity



BGF would also like to acknowledge the following, *inter alia*, for their support and generosity ...

Black Country Local Enterprise Partnership Growing Places Fund : Garfield Weston : Edward Cadbury Charitable Trust : The Headley Trust : The Charles Hayward Foundation : W.A. Cadbury Charitable Trust : John Ellerman Foundation : The Worshipful Company of Glass Sellers of London : The Pilgrim Trust

... together with many other contributions from other trusts, foundations and individuals. (E&OE)

Full details of BGF partners, supporters and sponsors at: www.britishglassfoundation.org.uk/the-foundation/

Follow us ...



<https://m.facebook.com/GlassMuseumUK/>



<https://twitter.com/glassmuseumuk>

Instagram

<https://www.instagram.com/glassmuseumuk/>

- fin -

Disclaimer

We comply with the provisions of Data Protection and so we must remind you that *GlassCuts* exists solely for the information of its supporters, our Privacy Statement is outlined in detail on our website at www.britishglassfoundation.org.uk and subscribers can withdraw at any time just by sending an email to the bgf address below with 'stop' in the subject header.

No responsibility etc. etc ... (usual caveats apply)

We welcome you passing *GlassCuts* on to anyone you feel may be interested in our work. You know the rest but if in any doubt then please communicate with us directly in the first instance via bgf@britishglassfoundation.org.uk



British Glass Foundation

www.britishglassfoundation.org.uk

Registered Charity No 1139252 / Registered Company No 7344291