

Celebrating BGF History 2009 – 2022

Click: www.britishglassfoundation.org.uk/the-foundation/ or <https://grahamfisher.co.uk/resources>

Edition: 220

Dated: 25.4.23

OFFICIAL OPENING SPECIAL EDITION A ROYAL AFFAIR

Your Editor writes: At what now seems to me like one million years BC but which was in reality only a little more than a decade ago, a small group of enthusiasts with nothing more in common than the English language (even then they had the better accent than I for it) and a passion for the future security of Stourbridge Glass coalesced as the British Glass Foundation.

Over the next few years we witnessed the lot; there were highs, there were lows, there was elation, there was despondency, there were supporters, there were those who said it couldn't be done. But all that now amounts to nothing more than Humphrey Bogart's 'hill of beans'. Because on Thursday 19th April 2023, almost exactly one year since its 'soft' launch, the brand-new Stourbridge Glass Museum was officially opened by HRH The Duke of Gloucester in a celebrity-spangled event that drew an invited guest-list of experts enthusiasts and aficionados alike from the *Wonderful World of Glass*^{®GF} and beyond to witness what will be recorded by history as, well, a truly historic event.

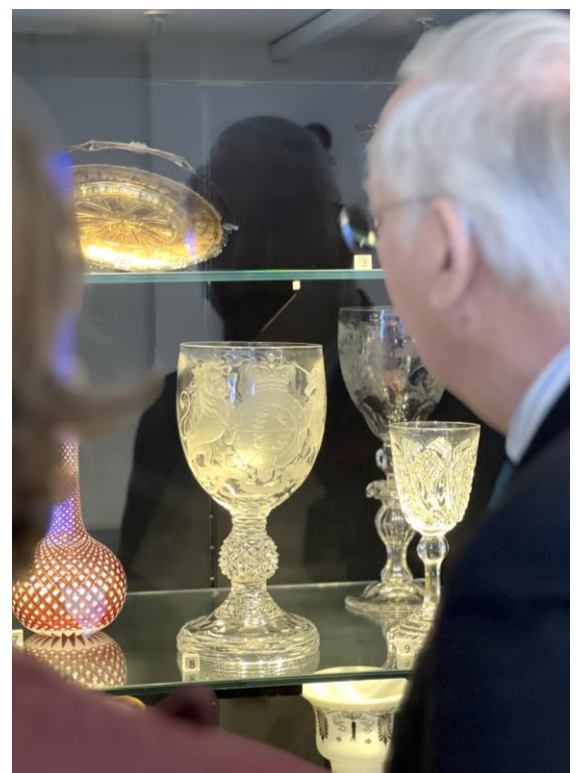


But enough of my wittering - we can only do this day justice by way of a comprehensive supplement that accompanies this issue. The list of acknowledgments in securing this wonderful achievement of 'the People's Museum' is a lengthy one but we must offer special thanks to all media representatives who helped us tell the world. For those closer to home there is a delightful report with images and video courtesy of our long-standing friend Bev Holder of *Stourbridge News* [here](#).

My personal thanks also to Lynn Boleyn MBE who has been my right hand since the very first edition of GC all those memories ago and who also kindly prepared the supplement.

We did it, friends. But always remember that without you we couldn't have done it, nor would we have wanted to. All that remains now is for you to come and enjoy it all. And spread the word; Stourbridge Glass rules, OK?

Keep the faith, and keep it glass.
Graham Fisher



WHAT'S ON AT SGM

Full details of our packed programme of events are contained in our brochure (available free of charge from the Museum and other local outlets) or via the Stourbridge Glass Museum website by clicking here: <https://www.stourbridgeglassmuseum.org.uk/events/>

IN OTHER NEWS ...

Thanks very much

Participants in our recent *Wild Escape Craft & Walk* will already know it was a great success.. For those of you who couldn't make it, well, we can tell you it was a great success. The event would not have been possible without the support of Julianne Joyce and her colleagues at [Canal & River Trust](#) and we are most grateful for their contribution. We are also particularly pleased to report how this is, once again, a fine example of the working synergy that BGF enjoys with CRT. Which is great stuff, seeing as our new museum is right next to a canal. We look forward to working alongside CRT to achieve similar successes in future.

Hitting the spot

Yes, we seem to be. How do we know? By taking a look at our visitors book in reception at SGM. It's all most heart-warming and gives us great pleasure to see that our visitors are evidently having a great experience with us. Pats on back and much appreciation to all concerned.

Waterjet for hire

The National Glass Centre (NGC) has a waterjet housed in the Sunderland University Glass & Ceramics department that is offered for hire to commercial artists and businesses. NGC is one of few waterjet glass specialists in the UK and can cut any type of glass from float to Bullseye, Spectrum, antique and flattened furnace glass from 3mm-20mm thick, with all glass supplied by the hirer. Cutting multiples and complex shapes, sheet metal for tools and moulds as well as flat ceramic, foam and stone are all possible. More via: Dr. Jo Mitchell: joanne.mitchell@sunderland.ac.uk

Glass Society talk

The discovery of Tutankhamun's tomb a hundred years ago is one of the archaeological highlights of the twentieth century but few may realise that part of the revealed treasures included thousands of glass inlays and beads.

Katja Broschat is a Corresponding Member of the German Archaeological Institute and has worked in Egypt for the last decade. She is presenting Glass Gems From Tutankhamun's Tomb by Zoom at 7pm on Thursday 18th May. Places are limited: to book contact David Willars of the Glass Society via gsocfinancial@gmail.com

School for summer

The summer school at the City and Guilds of London Art School is offering glass for the first time. Pate de verre artist Anne Petters will be teaching an introduction to pate de verre (designed for all levels) between 3rd - 7th July 2023. More [here](#)

In memoriam

We are saddened to learn of the death of Phil Loach following a period of ill health. He was 73 years old.. A talented photographer of wide repute, Phil was perhaps best known in this area for his long association with *Stourbridge News*, in which capacity he supported our work on numerous occasions. We are indebted to Phil for his contributions and offer sincere condolences to wife Dot and family.

GIFTS AND DONATIONS

to BGF funds, for which we thank you

Funding and maintaining a revenue stream is an ongoing requirement. We greatly value your contributions. BGF Trustees are unremunerated; all monies received go to the cause. Donations can be as one-off contributions or standing order.

BGF routinely reviews its donation procedures. Enhancements are announced as and when but we currently accept donations direct by cash, cheque and BACS. **We would respectfully ask that all cheques and orders be made payable to BRITISH GLASS FOUNDATION.**



This is the QR code for the British Glass Foundation.
Scan to browse the work of the BGF or to make a donation.

For donations by BACS our bank details are:

HSBC Bank
Branch Identifier Code: MIDLGB2108U
Sort code: 40-38-07
Account number: 72076780

To donate via *JustGiving* visit:

<https://donate.justgiving.com/donation-amount?uri=aHR0cHM6Ly9kb25hdGUtYXBpLmp1c3RnaXZpbmcuY29tL2FwaS9kb25hdGlvbnMvN2FIMjkxYTM1NDIhNDUxMjk1NzdlODgzO TRIzjhkMDQ=>

To donate *PayPal* visit: <https://www.paypal.com/uk/for-you/transfer-money/send-money> and donate to bgf@britishglassfoundation.org.uk

To donate through our website visit: www.stourbridgeglassmuseum.org.uk and hit the 'Donate' button.

Donations made by a UK taxpayer can attract Gift Aid, which is a great supplement to our funds and costs the donor nothing. All we need to claim this is your Gift Aid declaration; contact us for details if you have not already supplied us with relevant particulars.

Please note: In acknowledging the support of donors *GlassCuts* generally will not reveal either the details of the donor or the amount donated unless the donor indicates otherwise or the circumstances are in the public domain or public interest. This does not preclude the possibility of details, including the amount donated and/or the donor's particulars, appearing elsewhere in BGF material.

In addition to cash BGF is similarly grateful for donations of good quality glass to sell in our shop. All funds raised from the sale of donated glass go into a separate Collections Account towards future acquisitions for the museum. To make a donation directly into the **British Glass Foundation Collections Account** use sort code: **40-38-07** and account number: **52291789**.

Notes and queries

Whilst we are happy to facilitate this *ad hoc* information exchange on unusual items of interest BGF cannot undertake valuations or offer comment other than that supplied by our correspondents. Submission does not guarantee publication. No responsibility ... etc (*usual caveats apply*)

* The Power of *GlassCuts* strikes again, this time with a quite comprehensive response from David Willars of The Glass Society and SGM volunteer Brian Firmstone to the query in the last issue from Richard Close regarding his pressed glass. We have passed on the comprehensive information to Richard and extend our thanks to our respondents David and Brian. Problem sorted.

PARISH NOTICES

tell us the news from your world

Send us yours and we'll try to mention it. No guarantees other than we'll do our best.

* Latest news from the *Contemporary Glass Society*. www.cgs.org.uk

* *ArtLight* newsletter. Pioneering role of museums plus more. info@artlight-magazine.com

* *Alan J. Poole newsletter* latest edition. alanjpoole@aol.com

* *The Worshipful Company of Glass Sellers of London*. Updates. info@glass-sellers.co.uk

* *The Glass Society Events Schedule*. <http://glassassociation.org.uk>

From the Hot Studio:

www.allisternalcolm.com **Facebook** @allisternalcolmglass **Twitter** @allisternalcolm **Instagram** @allisternalcolmglassltd

Just a reminder ...

If you've got something 'glassy' to say and you want it said to somebody else, consider sending it to us and we'll do our best to help pass the information via *GlassCuts*. Usual address.

And finally, the best days of your life ...

During the recent school holidays my mate's kids wanted to go to the Sea Life Centre in Brummagem. Unfortunately for them he is a real tight-fisted miser and didn't want to pay so instead he took them round the corner to the Bull Ring fish market and whispered: '*Shoosh, they'm all asleep*'.

(source unknown, but I think it was me)

Graham Fisher MBE FRGS
Trustee, PR & Comms
pp British Glass Foundation
www.britishglassfoundation.org.uk

Getting involved

Would you like to be part of a vibrant and enthusiastic group of volunteers dedicated to supporting the British Glass Foundation and its work at the new glass museum?

Specialist skills or knowledge are welcome but not essential. We are committed to equal opportunities and full training will be given where necessary. To find out more, contact us via the usual address and we will be delighted to do the rest.

Promotional opportunities

Award-winning *Black Country Radio* and *BCR Xtra* broadcast throughout the Black Country on 102.5 FM and also via DAB and on-line around the world. Part of BCR's remit is to promote local events. If you are organising an event that satisfies the criteria of not-for-profit, charitable or philanthropic and is community orientated then you may be eligible for no-fee promotion.

Go to www.blackcountryradio.co.uk hover over 'Local' and click 'Local Events Guide'. Submit the form you'll find at upper left under '+ Add Event'. Your announcement will then appear on the *Events Guide*. Allow sufficient notice and the event may be 'voiced' and broadcast live on air during daytime broadcasting. Depending on the number of events, yours might be broadcast several times; there's no guarantee but it should appear at least once. Meanwhile it stays on the *Events Guide* listings on the world-wide web until the day itself.

Keeping in touch

BGF Secretary Lynn Boleyn MBE

Direct Line: 01384 900447

Email: bgf@britishglassfoundation.org.uk

Snailmail: Stourbridge Glass Museum, Stuart Works, High Street, Wordsley, West Midlands, DY8 4FB

THE BRITISH GLASS FOUNDATION GRATEFULLY ACKNOWLEDGES THE SUPPORT GIVEN BY THE EUROPEAN REGIONAL DEVELOPMENT FUND AND THE HERITAGE LOTTERY FUND



EUROPEAN UNION
Investing in Your Future
European Regional
Development Fund 2007-13



Made possible with

Heritage
Fund

... also Dudley MBC, Fieldings Auctioneers, Enover Community Trust, Ibstock Enover Trust, Clive & Sylvia Richards Charity



BGF would also like to acknowledge the following, *inter alia*, for their support and generosity ...

Black Country Local Enterprise Partnership Growing Places Fund : Garfield Weston : Edward Cadbury Charitable Trust : The Headley Trust : The Charles Hayward Foundation : W.A. Cadbury Charitable Trust : John Ellerman Foundation : The Worshipful Company of Glass Sellers of London : The Pilgrim Trust

... together with many other contributions from other trusts, foundations and individuals. (E&OE)

Full details of BGF partners, supporters and sponsors at: www.britishglassfoundation.org.uk/the-foundation/

Follow us ...



<https://m.facebook.com/GlassMuseumUK/>



<https://twitter.com/glassmuseumuk>

Instagram

<https://www.instagram.com/glassmuseumuk/>

- fin -

Disclaimer

We comply with the provisions of Data Protection and so we must remind you that *GlassCuts* exists solely for the information of its supporters, our Privacy Statement is outlined in detail on our website at www.britishglassfoundation.org.uk and subscribers can withdraw at any time just by sending an email to the bgf address below with 'stop' in the subject header.

No responsibility etc. etc ... (usual caveats apply)

We welcome you passing *GlassCuts* on to anyone you feel may be interested in our work. You know the rest but if in any doubt then please communicate with us directly in the first instance via bgf@britishglassfoundation.org.uk



British Glass Foundation

www.britishglassfoundation.org.uk

Registered Charity No 1139252 / Registered Company No 7344291