

# GlassCuts

The Journal of the British Glass Foundation;  
the Voice of Stourbridge Glass Museum

STOURBRIDGE  
GLASS MUSEUM

## Stourbridge Glass Museum – how it came into being.

*The remarkable tale of the period from the formation of BGF in 2010 to SGM official opening in 2013.*  
Now available direct from the museum. All proceeds to BGF.

Edition: 239  
Dated: 27.2.24

## Welcome ...

... to the latest issue of your favourite *GlassCuts* which this time is accompanied by the inaugural edition of its brand-new *ad hoc* stablemate **OffCuts**.

Since it first threw its doors open to the public on 9<sup>th</sup> April 2022, followed by our 'official' opening on 19<sup>th</sup> April 2023, Stourbridge Glass Museum has gone from strength to strength. Did you know, for example, that at any given time we now have at least *four* resident artists on site? Together with teams regularly operating in our *Hot Studio*, that represents a whole bunch of people who have committed their businesses and talents to Stourbridge Glass Museum. Then there are regular visits by all sectors of the community as part of our education programme and any number of other activities, organised and supervised by our simply brilliant volunteers.

We recognise the time is now right for us to expand our communications to accommodate these new developments. So, your ever-popular *GlassCuts*, based here in the shimmering opulence that is *GlassCuts Towers*, will continue as always to bring you the latest news and updates from the *Wonderful World of Glass*<sup>®GF</sup> but now we will be broadening our scope via **OffCuts** to offer even more detailed off-the-wall coverage of people, events and other items of interest particularly in and around the museum. We will also continue to bring news of glassy matters from beyond our doors via our occasional **GlassCuts Special Supplements**. What's more, everything is all still free of charge; all you have to do, Dear Reader, is hit that subscribe button.

Don't forget that in addition to our email bulletins you can also keep up to date via our **websites** [www.stourbridgeglassmuseum.org.uk](http://www.stourbridgeglassmuseum.org.uk) and [www.britishglassfoundation.org.uk](http://www.britishglassfoundation.org.uk) together with our **social media** feeds across many current popular platforms. Or, if you're not into all this cyber-thingy stuff and still prefer the more tried and trusted method of getting in touch then you can send us a good old **snail-mail**. We do believe we are becoming so popular that an envelope marked 'People's Museum, Stourbridge' would reach us, but perhaps best stick to our proper address for now. If all that fails, we still have a land-line **telephone**. Our full contact details are listed below.

**Onwards and upwards friends, onwards and upwards ...**

## SGM Gala Evening

Plans are now well-advanced for our special **Gala Evening** on **Friday 19<sup>th</sup> April 2024**.

This prestigious event to celebrate the anniversary of the opening of Stourbridge Glass Museum will include a VIP reception followed by an evening of presentations and 'live' demonstrations showcasing the museum's work. Speakers will include Yours Truly, glassmaker Chris Day, and glass expert Dr Max Stewart. Allister Malcolm and his team will be showing their skills at glassmaking and their exhilarating *Fire Poi* performance.

A highlight of the evening will be a raffle/blind auction with the opportunity to win a truly unique work of glass specially made for the event by glassmaker and fellow BGF Trustee Chris Day. Plus, there will be a very distinctive surprise courtesy of our resident glassmaker Allister.

Tickets are £50 and are going fast so don't miss out. All proceeds will support SGM.

BGF Chairman Graham Knowles says: *'The Gala Evening is our celebration of what we have always felt to be the 'People's Museum'. This is the first in what we intend as an annual event that will celebrate both the area's rich glassmaking history and its bright future'*.

For details and booking visit: <https://www.stourbridgeglassmuseum.org.uk> and click on 'Book Now' at the bottom right corner.

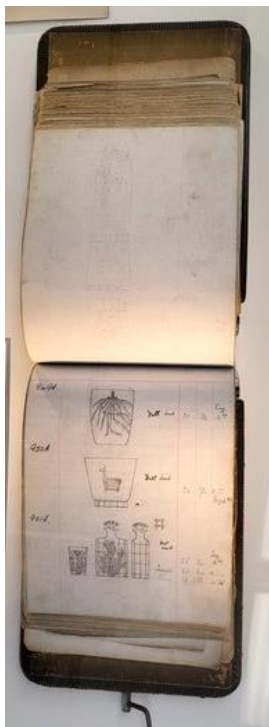


Photo by Simon Bruntnell

## WHAT'S ON AT SGM

Full details of our packed programme of events are contained in our brochure (available free of charge from the Museum and other local outlets) or via the Stourbridge Glass Museum website by clicking here: <https://www.stourbridgeglassmuseum.org.uk/events/>

## Not your average cabinet



We love it when people look at our exhibits in their cabinets and tell us how it's so natural that it feels like being at home. Lovely, but there is a difference, of course; unlike their domestic counterparts our cabinets have to be proofed against just about everything from earthquakes to nuclear Armageddon. Well, not quite - but they are certainly very tough. Another major problem is light, especially the fading effects of sunshine and UV. Just take a look at the back of your curtains against the window to see the effects and you'll appreciate how similar fading of venerable old documents could be catastrophic. As for dampness and humidity, well, don't even go there. The result is that, unlike their domestic counterparts, our cabinets cost an absolute arm and a leg.

So, it's great to hear from our Curator Harrison that he has secured a safe place for you to view some very special documents indeed. He tells us:

'The new display case has a UV protective case and lighting suitable for displaying sensitive archive material, and further humidity controls to keep it in a safe, stable environment. It was purchased with a Collections Access Grant thanks to the Decorative Arts Society, who have kindly supported us a second time as they were so impressed with the collections. I was invited to speak for them at the Ashmolean in October about Stourbridge Glass Museum and our collection. They were all incredibly pleased at the idea of seeing the various areas of decorative glass arts.'

The first exhibits are two of my personal favourites; Keith Murray Description Book A and the Gray-Stan Factory Catalogue. The KM Description Book is internationally significant, consisting of over 1,000 of his designs for Stevens & Williams. The Gray-Stan factory catalogue, which the museum acquired shortly after I arrived, was from the collection of James Manning, head glassblower for Elizabeth Graydon-Stannus' factory in London. I've displayed the catalogue open with a few of the loose pages alongside it.

To compliment the Gray-Stan catalogue, we have a whole shelf of glass items with provenance from James Manning's personal collection, with more Gray-Stan glass due to come on display from the collections store soon. We also have the KM Description Book open on the page displaying the famous cactus decanter which we also have on display upstairs. It's a bit full circle for me, as it was incredibly special to get to first view the pattern book when I started my job back in 2022, and I knew members of the public would be as thrilled as me to see it finally on display.

We are currently conserving, cataloguing, and researching the Whitefriars factory boards and the 19<sup>th</sup> century Richardson patent acquired late last year, which will be displayed similarly in future'.

BGF is grateful for the support of the Decorative Arts Society [www.decorativeartsociety.org.uk](http://www.decorativeartsociety.org.uk) and also offers special thanks to Harrison and colleagues for doing such a brilliant job. All it needs now is for you good folk to come and see it all for yourselves. Now there's an offer you can't refuse.





## GIFTS AND DONATIONS

to BGF funds, for which we thank you

Funding and maintaining a revenue stream is an ongoing requirement. We greatly value your contributions. BGF Trustees are unremunerated; all monies received go to the cause. Donations can be as one-off contributions or standing order.

BGF routinely reviews its donation procedures. Enhancements are announced as and when but we currently accept donations direct by cash, cheque and BACS. **We would respectfully ask that *all* cheques and orders be made payable to BRITISH GLASS FOUNDATION.**



This is the QR code for the British Glass Foundation.  
Scan to browse the work of the BGF or to make a donation.

For donations by BACS our bank details are:

**HSBC Bank**  
**Branch Identifier Code: MIDLGB2108U**  
**Sort code: 40-38-07**  
**Account number: 72076780**

To donate via *JustGiving* visit:

<https://donate.justgiving.com/donation-amount?uri=aHR0cHM6Ly9kb25hdGUtYXBpLmp1c3RnaXZpbmcuY29tL2FwaS9kb25hdGlbnMvN2FIMjIxNDIhNDUxMik1NzdlODgzO1RIZjhkMDQ=>

To donate *PayPal* visit: <https://www.paypal.com/uk/for-you/transfer-money/send-money> and donate to [bgf@britishglassfoundation.org.uk](mailto:bgf@britishglassfoundation.org.uk)

To donate through our website visit: [www.stourbridgeglassmuseum.org.uk](http://www.stourbridgeglassmuseum.org.uk) and hit the 'Donate' button.

Donations made by a UK taxpayer can attract Gift Aid, which is a great supplement to our funds and costs the donor nothing. All we need to claim this is your Gift Aid declaration; contact us for details if you have not already supplied us with relevant particulars.

*Please note:* In acknowledging the support of donors *GlassCuts* generally will not reveal either the details of the donor or the amount donated unless the donor indicates otherwise or the circumstances are in the public domain or public interest. This does not preclude the possibility of details, including the amount donated and/or the donor's particulars, appearing elsewhere in BGF material.

**In addition to cash** BGF is similarly grateful for donations of good quality glass to sell in our shop. All funds raised from the sale of donated glass go into a separate Collections Account towards future acquisitions for the museum. To make a donation directly into the **British Glass Foundation Collections Account** use sort code: **40-38-07** and account number: **52291789**.

**Notes and queries**

Whilst we are happy to facilitate this *ad hoc* information exchange on unusual items of interest BGF cannot undertake valuations or offer comment other than that supplied by our correspondents. Submission does not guarantee publication. No responsibility ... etc (*usual caveats apply*)



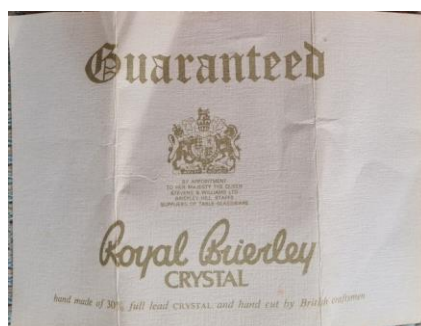
\* Reader Peter Hearne poses this one for us to ponder: *'I have recently acquired what I believe to be a Victorian 'banquet' oil lamp in onyx and brass. It is not in the cleanest condition and, sadly, the shade is broken into a lot of pieces. I have tried to ascertain the size and shape of the shade by doing a partial jigsaw and it would appear to be a beehive shape with a 4" base, a height of about 8" and a diameter also about 8" at the wide part.*

*I understand the colouring would be described as 'cranberry to clear'. The manufacturing process appears to involve moulding or pressing to achieve the swirl effect and the fruit relief - and possibly laminating the coloured outer to a clear inner? Would you be able to offer some clarification on what the shade actually is (or was), please?'*

Get to it, folks, and let's see if we can help Peter. I'm having a guess that he wouldn't mind also knowing where he could get a replacement. Usual address, please.



\* Well, we know it's Royal Brierley, so I have a feeling this query from reader Suzanne Pages-Slassor is going to see us fair inundated with responses. Suzanne says: *'I hope you can help me identify the era or year of this pretty bud Vase, please. It is 3.5" high and Windsor Cut.'* The images tell the rest.



Every piece of Royal Brierley Crystal is handmade by craftsmen of experience and training, and by the very nature of the hand work no two pieces are exactly alike. The craftsman's touch giving these slight variations is a matter for personal pride in these handmade articles, a characteristic not found in machine-made goods.

## PARISH NOTICES

tell us the news from your world

*Send us yours and we'll try to mention it. No guarantees other than we'll do our best.*

- \* Alan J. Poole newsletter latest edition. [alanjpoole@aol.com](mailto:alanjpoole@aol.com)
- \* Contemporary Glass Society latest news. [www.cgs.org.uk](http://www.cgs.org.uk)
- \* The Worshipful Company of Glass Sellers of London. Updates: [info@glass-sellers.co.uk](mailto:info@glass-sellers.co.uk)
- \* The Glass Society Events Schedule. <http://glassassociation.org.uk>

### From the Hot Studio:

[www.allistermalcolm.com](http://www.allistermalcolm.com) **Facebook** @allistermalcolmglass **Twitter** @allistermalcolm **Instagram** @allistermalcolmglassltd  
Follow all that's going on via Allister's feeds.

Keep up with the latest via AI's media feeds.

### Just a reminder ...

If you've got something 'glassy' to say and you want it said to somebody else, consider sending it to us and we'll do our best to help pass the information via *GlassCuts*. Usual address.

### And finally ...

*'Just asking for a friend; how many famous Tamla Motown acts can you think of? Personally I can only manage about two or three. Maybe four, tops'.*

Ta-da!!!

Graham Fisher MBE FRGS  
Trustee, PR & Comms  
pp British Glass Foundation  
[www.britishglassfoundation.org.uk](http://www.britishglassfoundation.org.uk)

### Volunteering at Stourbridge Glass Museum

Would you like to be part of a vibrant and enthusiastic group of volunteers dedicated to supporting the British Glass Foundation and its work at the new glass museum?

Specialist skills or knowledge are welcome but not essential. We are committed to equal opportunities and full training will be given where necessary. To find out more, contact us via the usual address and we will be delighted to do the rest.

### Promotional opportunities

Award-winning *Black Country Radio* and *BCR Xtra* broadcast throughout the Black Country on 102.5 FM and also via DAB and on-line around the world. Part of BCR's remit is to promote local events. If you are organising an event that satisfies the criteria of not-for-profit, charitable or philanthropic and is community orientated then you may be eligible for no-fee promotion.

Go to [www.blackcountryradio.co.uk](http://www.blackcountryradio.co.uk) hover over 'Local' and click 'Local Events Guide'. Submit the form you'll find at upper left under '+ Add Event'. Your announcement will then appear on the *Events Guide*. Allow sufficient notice and the event may be 'voiced' and broadcast live on air during daytime broadcasting. Depending on the number of events, yours might be broadcast several times; there's no guarantee but it should appear at least once. Meanwhile it stays on the *Events Guide* listings on the world-wide web until the day itself. And it's all entirely free of charge.

## Second time around

*GlassCuts* is compiled and edited *pro bono* and distributed to its subscribers free of charge. To receive *GlassCuts* contact our Secretary (below). However, if you miss us first time around, or if you are searching for that elusive feature, then all issues of *GlassCuts* right back to number 1 are archived [here](#).

## Keeping in touch

**BGF Secretary & Business Manager Lynn Boleyn MBE**

01384 900447 : [bgf@britishglassfoundation.org.uk](mailto:bgf@britishglassfoundation.org.uk) : Stourbridge Glass Museum, Stuart Works, High Street, Wordsley, West Midlands, DY8 4FB

**THE BRITISH GLASS FOUNDATION GRATEFULLY ACKNOWLEDGES THE SUPPORT GIVEN BY THE EUROPEAN REGIONAL DEVELOPMENT FUND AND THE HERITAGE LOTTERY FUND**

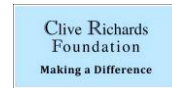


**EUROPEAN UNION**  
Investing in Your Future  
European Regional  
Development Fund 2007-13



Made possible with  
**Heritage  
Fund**

... also Dudley MBC, Fieldings Auctioneers, Enover Community Trust, Ibstock Enover Trust, Clive Richards Foundation



BGF would also like to acknowledge the following, *inter alia*, for their support and generosity ...

Black Country Local Enterprise Partnership Growing Places Fund : Garfield Weston : Edward Cadbury Charitable Trust : The Headley Trust : The Charles Hayward Foundation : W.A. Cadbury Charitable Trust : John Ellerman Foundation : The Worshipful Company of Glass Sellers of London : The Pilgrim Trust : FCC Communities Foundation ... plus many contributions from other trusts, foundations and individuals. (E&OE)

Full details of BGF partners, supporters and sponsors at: [www.britishglassfoundation.org.uk/the-foundation/](http://www.britishglassfoundation.org.uk/the-foundation/)

### Follow us ...



<https://m.facebook.com/GlassMuseumUK/>



<https://twitter.com/glassmuseumuk>

**Instagram**

<https://www.instagram.com/glassmuseumuk/>

### Disclaimer ...

We comply with the provisions of Data Protection and so we must remind you that *GlassCuts* exists solely for the information of its supporters and is distributed only to those who consent (as defined by GDPR) to being on our database in order to receive it or other relevant information.

Our full Privacy Statement is at [www.britishglassfoundation.org.uk](http://www.britishglassfoundation.org.uk) or can be supplied by us on request. Subscribers can withdraw at any time simply by sending an email to the bgf address below with 'stop' in the subject header. No responsibility etc. etc ... (usual caveats apply)

We welcome you passing *GlassCuts* on to anyone you feel may be interested in our work. You know the rest but if in any doubt then please communicate with us directly in the first instance via [bgf@britishglassfoundation.org.uk](mailto:bgf@britishglassfoundation.org.uk)



**British Glass Foundation**

[www.britishglassfoundation.org.uk](http://www.britishglassfoundation.org.uk)

Registered Charity No 1139252 / Registered Company No 7344291